

NEXGO N6 Pro

Version 1.0 Issued July 2025

[NEXGOGLOBAL.COM](https://nexusglobal.com)

© 2025 NEXGO | The information contained in this document is subject to change without notice. All pictures shown are for illustration purpose only, actual product and software may vary. NEXGO and the NEXGO logo are either trademarks or registered trademarks of NEXGO in the China and/or other countries. All other trademarks or brand names are the properties of their respective holders.



N6 Pro

Smart Mini POS Terminal

Tiny Frame, Tough Build



N6 Pro is a sleek, lightweight smart POS built for mobile and modern retail. It features a 5.5-inch display, Android 13, and a powerful processor for smooth performance. With a premium ergonomic design, IP54 protection, and PDA-level scanning, it's ideal for inventory, ticketing, and micro-businesses.

Stylish

Ultra-slim and
Compact

Performance

Quad-core, 2.0GHz,
5.5" display, Android 13

Reliability

1.2m drop resistance

Upgraded Aesthetic Design

With its sleek black appearance and premium aesthetic, the N6 Pro stands out in any setting. The anti-slip textured back and ergonomic contour ensure a comfortable grip, while its lightweight, ultra-slim body makes it perfect for mobile merchants and compact retail environments.

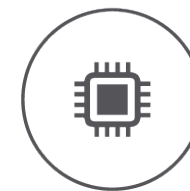
Anti-slip Textured

16.5mm Thickness



Outstanding Performance

Powered by an octa-core or quad-core processor, the N6 Pro delivers smooth multitasking and seamless performance, running on Android 13 with a refined and intuitive UI.

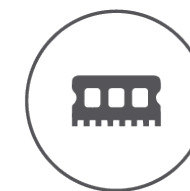


Quad-Core

2.0GHz

Octa-Core(Optional)

4*2.0GHz+4*1.5GHz processor



Memory

2GB RAM + 32GB Flash

3GB RAM+32GB Flash(Optional)

4GB RAM+32GB Flash(Optional)



Android 13



5.5" HD Display

Featuring a 5.5-inch high-resolution screen, N6 Pro delivers a crisp, responsive interface for smooth and intuitive customer interactions.

Long-lasting Battery Life

Powered by a 3.85V / 4000mAh high-capacity battery, the N6 Pro delivers all-day performance—even in the most demanding business environments.



1.2m



Rock-Solid

Engineered for durability with 1.2m drop resistance, IP54 water and dust protection, and explosion-proof certification for rugged environments.

Rugged

IP54 Dust-proof & Water-proof
Explosion-proof
Drop Resistance

ATEX Certified

ATEX International Certification

High-Speed Network Connectivity

N6 Pro supports multiple internet access methods, 4G/3G/2G, Bluetooth 5, 802.11a/b/g/n/ac, 2.4GHz+5GHz Wi-Fi standards ensuring stable and fast network connections for data transmission and online payments.



4G/3G/2G



BT 5.0



2.4GHz+5GHz

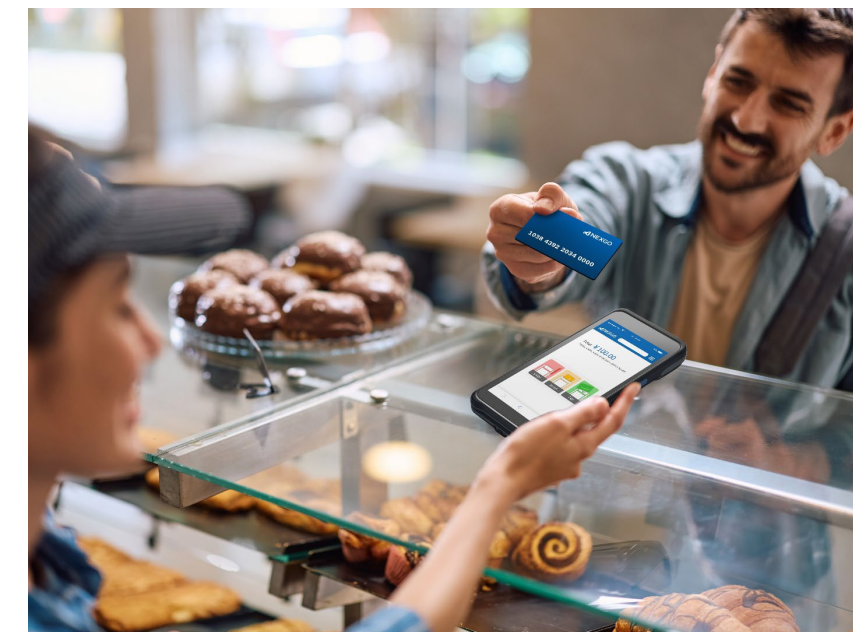
Professional PDA-Level Scanner

The N6 Pro's optional professional scanning module delivers fast and precise barcode recognition—even for damaged or dense codes. Designed for inventory, ticketing, and logistics, it rivals the performance of dedicated PDA devices, ensuring high-speed efficiency in demanding scenarios.



Versatile Accessory Ecosystem

Flexible peripheral integration tailored for retail, logistics, delivery, and field services—empowering businesses across every scenario. Whether you're a street vendor, pop-up retailer, or mobile service provider, this smart mini POS fits right in your hand—easy to carry, effortless to use, and ready to go wherever your business takes you.



Payment Methods

N6 Pro accepts payments of magnetic strip cards, IC cards, contactless/NFC and 1D&2D codes.



Certifications



N6 Pro

Operating System Powered by Android 13	Display 5.5”HD Color Screen,1440*720 Capacitive Touch screen, Multi-Touch	Location GPS, GLONASS or BEIDOU	Environmental Operating Temperature : 0°C to 50°C(Non-charge) Storage Temperature : -20°C to 70°C Relative Humidity : 5% to 95%(Non-Condensing)
Processors Quad-Core 2.0GHz Processor Octa-Core 4*2.0GHz+4*1.5GHz Processor (Optional) Security Chip	Card Readers Magnetic Stripe Cards Chip Cards Contactless Cards	Camera Front: No Camera/2MP /16MP Rear: 2MP/5MP	
Memory 2GB RAM + 32GB Flash 3GB RAM+32GB Flash(Optional) 4GB RAM+32GB Flash(Optional) (Micro SD Card Supported, up to 128GB)	Peripheral Ports 1 x Type-C OTG, 1 x SD3.0; 1 x SIM + 2 x SAM, Or 2 x SIM+1 x SAM(Optional) Or 1xSIM+1xeSIM+1xPSAM(Optional) Audio jack(Optional)	Audio Built-in Speaker Mic	Accessories Charging Base(Optional) Scanning Module(Built-in)(Optional)
Display 5.5”HD Color Screen, 1440*720 Capacitive Touch screen, Multi-Touch	Communication 4G/3G/2G Wi-Fi, 802.11a/b/g/n/ac, 2.4GHz&5GHz BT5.0	Battery 3.85V/4000mAh	Keys 1 Power Key, 1 Shortcut key, 1 Volume+, 1 Volume-
PIN Pad Software PIN Pad Blind PIN Supported	Adaptor USB Type C 5V/2A	Certifications CE, ATEX, IP54; ROHS/WEEE; EMV3.0, L1&L2, Quickpass, Paypass, Paywave, JCB, AMEX, Discover, TQM;PCI6/7.X;	

THANK YOU!

NEXGOGLOBAL.COM

© 2025 NEXGO

